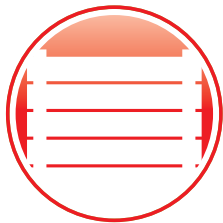


# Noishield® Continuline Sound Barriers

Concealed Structural Elements for a More Aesthetically Pleasing Sound Barrier System



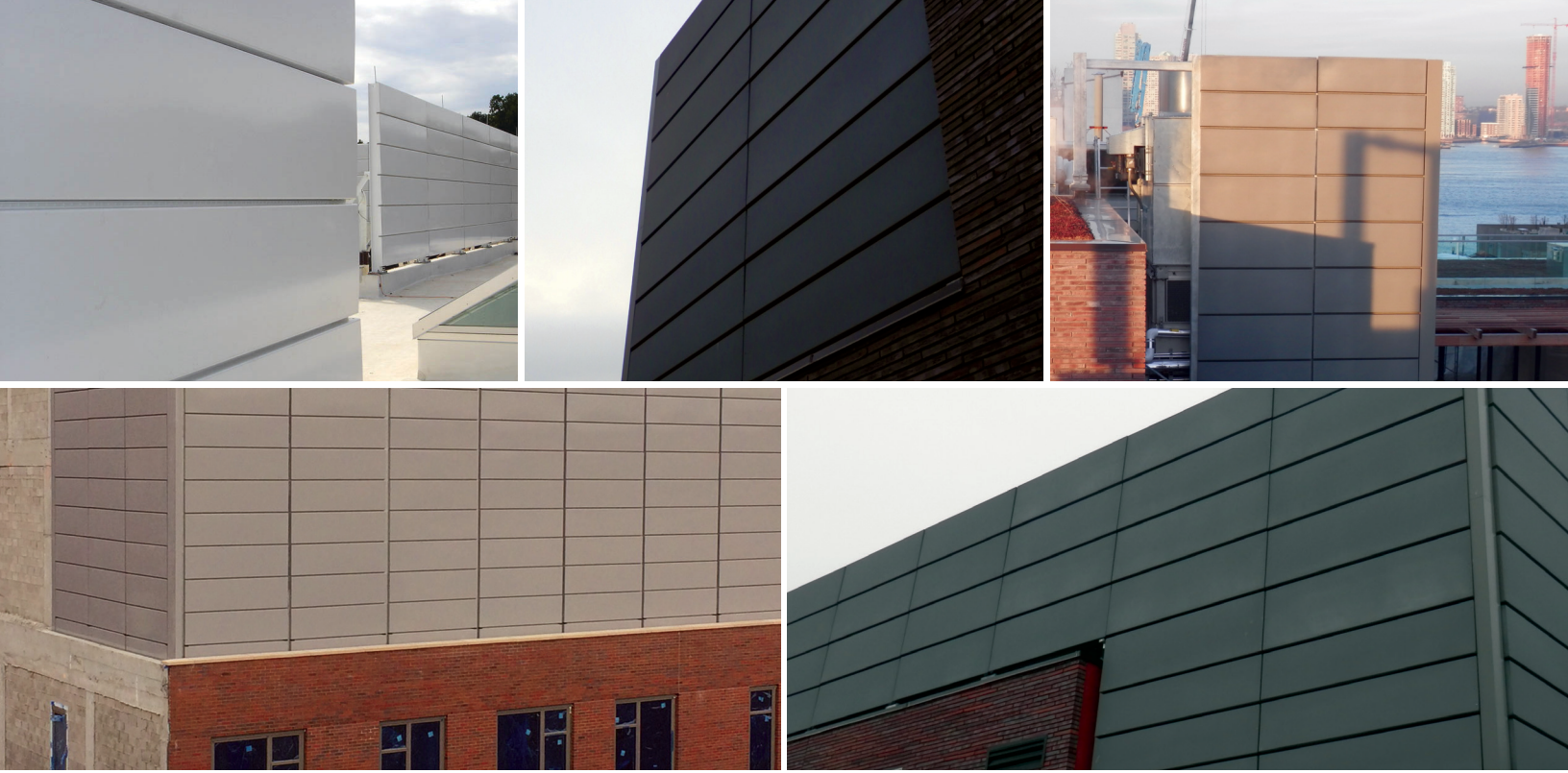
IAC's Noishield Continuline is more **aesthetically pleasing** than a traditional barrier wall — it allows architects and customers to conceal their structural members. The Continuline panels are the same construction as the standard IAC FS panels.

The key difference is the endcap — the endcap wraps the column; leaving an **architecturally pleasing** reveal that mimics the horizontal reveal already prevalent in the system.

## Continuline Features:

- Superior aesthetic
- Special slotted end-caps
- Solid front face of panel conceals the column
- Acoustic & architectural screen in a single assembly & installation





### Noishield Continuline Systems Offer:

- Steel or aluminum materials of construction for a choice of economy or light-weight
- Powder-coated or mill-finish (in-coated) finishes for a range of options
- Multiple panel configurations and a range of sound transmission loss, STC & sound absorption performances to match each project's unique requirements

### Typical Applications:

- Rooftop systems
- Train/rail systems
- Ground mounted
- Chiller, generator & compressor packages



Laboratory Rated Acoustic Performance  
STC-30 to STC-33 / NRC 1.00 to 1.05



Excellent weather & corrosion resistance.  
Galvanized steel materials with powder coated finish applied post assembly. Fully non-welded construction to avoid damage to galvanized coating.



Free-standing, able to span supports  
of up to 20 feet depending on local codes  
& wind-speed requirements.